

L'ordine dei canti che si eseguiranno a
PARIGI il giorno 27 Giugno.

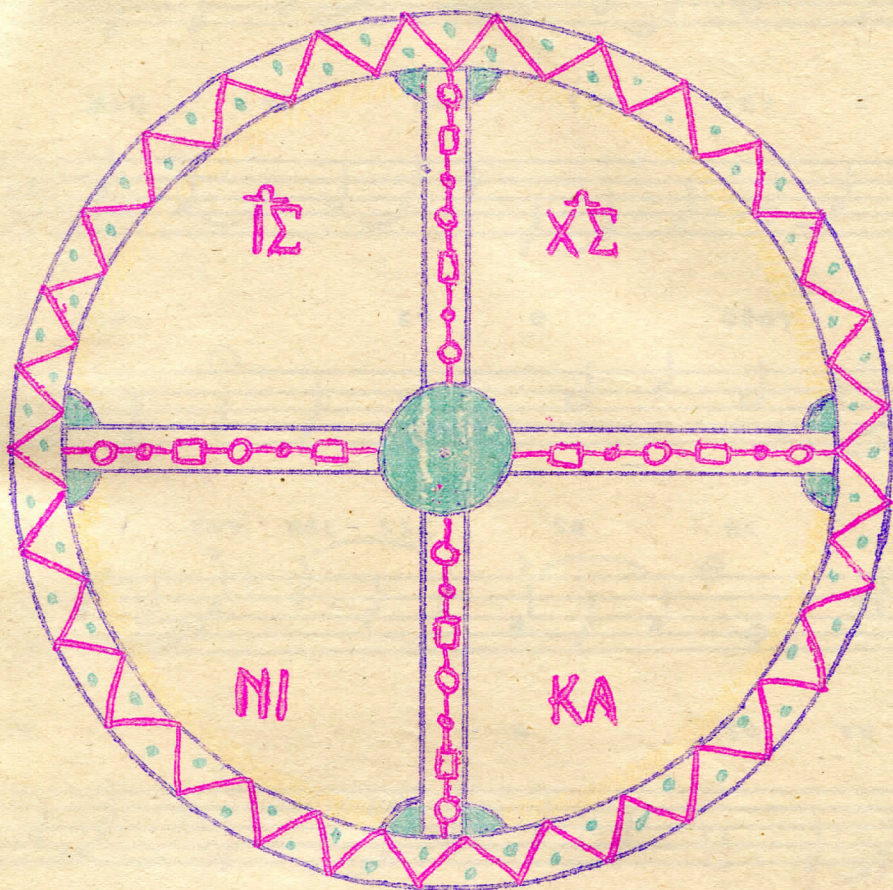
- 1) Enite ton Kyrion (Is pàsan tin gjin; tono 3°)
 - 2) O lendio zosàmenos
 - 3) Simeron o apròsitos
 - 4) Ecselùme
 - 5) Makàrii i fovùmeni (tipo: Mksisjérthi)
 - 6) Nifthéntes pòchas -e- Oràte filii
 - 7) Litrosin apéstile (tipo: Enite t.3°)
-

Ta Agjia Pathi.

- 8) Nin e dhinàmis (con parole di: Ecsigòrasas)
- 9) Aron, Aron -e- Arhondes Evréon
- 10) Simeron cremàte.
- 11) O evschimon -e- Tes Mirofòris
- 12) I Zoì en tàfo
- 13) E gjence e pase

Per chiusa :

- a) Theotòchie Parthéne
- b) Mi tis fthoràs



ΙΣ

ΧΣ

ΝΙ

ΚΑ

ΕΙΣ ΠΑΣΑΝ ΤΗΝ ΓΗΝ....

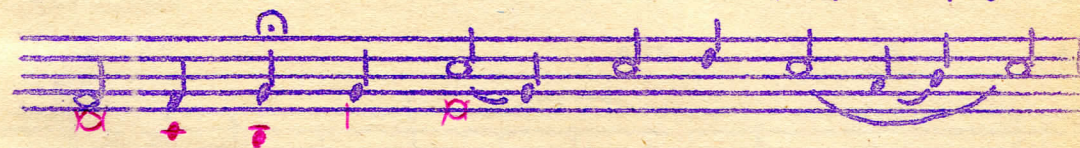
Μκ. γ'. 1



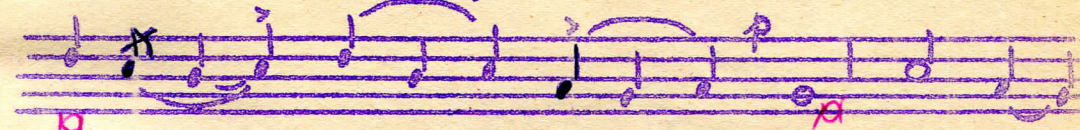
ΕΙΣ ΠΑΣΑΝ ΤΗΝ ΓΗΝ Ε -



ΞΗΛ ΘΕΝ ΕΝ Ο ΦΘΟΥ ΥΟΣ



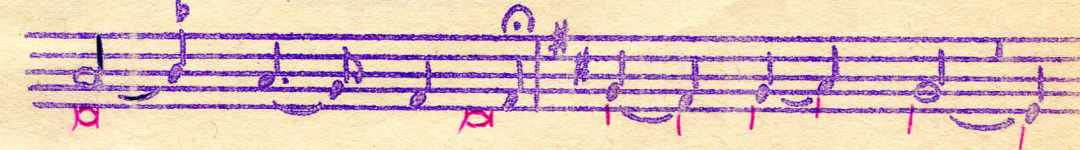
ΑΥ ΤΩΝ ΚΑΙ ΕΙΣ ΤΑ ΠΕ



ΡΑ Ε ΤΑ ΤΗ



Η ΗΣ ΟΙ ΟΙ ΚΟΥ



ΜΕ Ε ΝΗΣ ΤΑ Α Α



ΡΗ ΜΕ ΤΑ Ε

α α υ τ ω ν Α α λ

α λ λ η λ ο υ ε α α

α α λ λ η λ ο υ ε α

α α α α λ λ η λ ο υ ε

ε α α α



O LENDIO ZOSAMENOS...

3



O len di- o zo sa me nos

Ο λεν, τι ω ζω σα με νος



ke ni i psas tu us po dhas

και νι ι ψας του ς πο δας



ton ma thi ton Cri - ste o The os a

των μα θη των Χρι στε ο θε ος α



po pli non i mon tis psi - chis

πο πλυ νον η μων της ψυ χης



ton mo li is mon - - - chié pe ri

τον μο λυ σπον - - - και πε ρι



zo son i nas syn de - smon pnevma ti- ko

ζω σον η μας συν δε σπον πνευματι κο



tus po das to on ma - - thi - - to

τους πο δας των μα θε - των

on ke ec ma bin to le en ti - o

ων και εκ μας γεν των λε εν τι ψ

o i in dhi - - e zo sme nos o - tan

ω η ην δι ε ζω σμε νος ο - των

u un e - ni pse tus po dha es

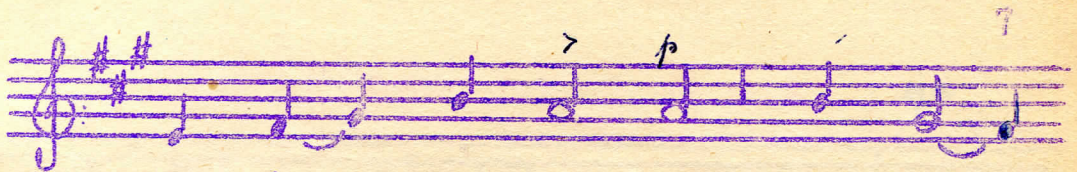
ου ουν ε - νι ψε τους πο δας

to - on ma thi - ton i - i - pen

των μα θε των λε λε γεν

ev tis i mi i is os the ri - e - ste

ου τοις υ μελ εις κα θε ρολ - ε - στε



a I'u - hi pan the i dhi -
αλ λ'ου - χε παντες η δει -



ger - ton pa - ra dhi - do o on
γαρ - τον πα - ρα θε δο ο ον



da av to o o o o on.
τα αυ το ο ο ο ο ον.

21 του Μαΐου μηνός 1954

ΕΠΙΣΤΗΜΟΝΙΚΟΝ ΕΤΟΣ



ΕΠΙΣΤΗΜΟΝΙΚΟΝ ΕΤΟΣ



ΕΠΙΣΤΗΜΟΝΙΚΟΝ ΕΤΟΣ

ΣΗΜΕΡΟΝ ΚΡΕΜΑΤΑΙ...

ἤ λα. π λ β

μα



ΣΥ ΜΕ ΡΟ ΚΡΕ ΜΑ ΤΑΙ Ε ΠΙ
Si me ro cre ma te e pi



ΞΥ ΛΟΥ Ο ΕΝ Ψ ΔΑ ΣΙ
ksi lu o en e da si



ΤΗΝ ΨΗΝ ΚΡΕ ΜΑ ΟΥΣ
tin jin cre ma sas



ΤΗΝ ΨΗΝ ΚΡΕ ΜΑ ΟΥΣ
tin jin cre ma sas



ΤΗΝ ΨΗΝ ΚΡΕ ΜΑ Α
tin jin cre ma a



Α ΟΥΣ
a sas



Στε φα νον εξ α κανθων πε ρι τι θε ται ο τωνΑγ

Ste fa non eks a canthon pe ri ti the te o tona



γε λων Βα σι λευς ψευδη πορ φυ ραν πε ρι βαλλεται

nje lon Va si levs psevdi por fi ran pe ri vale te



ο περιβάλλων τόν ουρανον εν νε φε

o peribalon ton ouranon en ne fe



ς λαρις ρα πι σμα κα τε δε ζα το

s les ra pi sma ka te de ksato



ο εν Ι ορ δα νη ε λευ θε ρω σας τον Αδαμ

o en I or da ni e lev the ro sas ton Adam



η λος προση λω θη ο νυμ φι ος της εκκλη σι

i lis pro si lo thi o nia fi os tis ecclesi



ι ι ας λογ η η κεν
i i as lon hi e ke



τη τη ο ο υι ος της Παρτε
nti thi o o i os tis Parte



ε ε *Sotto voce*
• • νου προ κυ νου
nu pro ski nu



μεν σου τα πα τη Χρι στε προ κυ νου μεν σου τα
men su ta pa thi Cri ste pro ski na men su ta



πα τη Χρι στε προ κυ νου μεν σου τα πα τη Χρι στε
pa thi Cri ste pro ski na men su ta pa thiCriste



f declamando
δειξον η μεν και την εν δο ξου σου α να στασιν.
dikson i min ke tin endo kson su a na sta sin.

8-V-1954



EKSELUME KYRIE

8



E kse - là - - me Ky ri e eks anthrò-



pu po - ni - rù u chié a pò andròs a - di cu



chié- do - li - - u ri - - se me.

Stic.



I ti nes e lo ghi san de



a dhi ki an en car dhi a o lin tin i



mé ran pa re tà san- to pò - - lé mus.

EKSIGJENTI



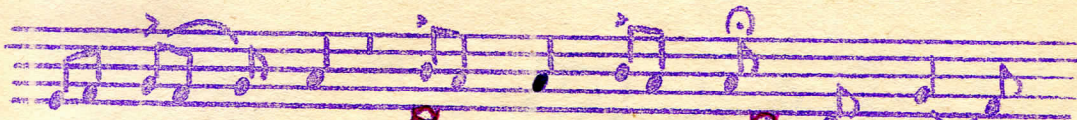
E osi gjé é erthi



os i pno- o - on Vy - y



y - ri on chié a - - a



a - né e sti so o -



o - - o



o - - o



non i i i



i - na - a - a



a as Al - li i



i i lu - i a



al li- lu - - i a a - -

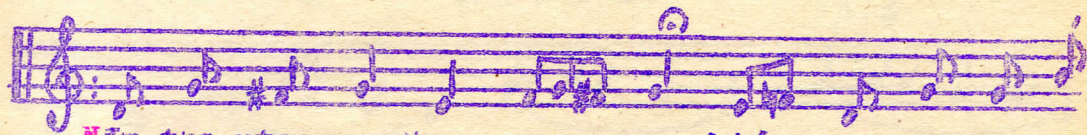


a a al li lu u u i



a a a a.

OOOOOOOOOOOOOOOOOOOOOO
XXXXXXXXXXXXXXXXXXXXXX
ZZZZZZZZZZZZ
BBBBBBBBS
TTTTT



Niā the ntes po dha a chié -pro ca tharte
 O rà te e ri i is fi li mi tro is



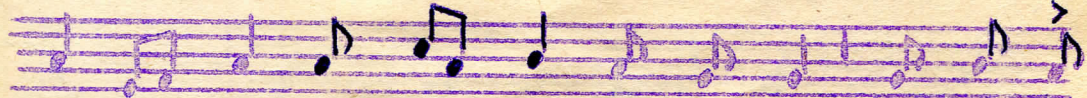
nde - es my sti ri u né the - esi tu
 the- - e nin gar in gji chen - o ra li



thi - u tu Chri ~~sty~~ -stu su u u i
 fthi- ne me ktan - thi ne e e her



y pi ré te - - - - e ec si on
 sin a rò mo - - - - on pantes de



e le- o nos mé - ga pros o ros si na ni
 scor pi - sthì se sthé- mè li pon des us sy nà



i il thon y - mna - ntes se - fi làn -thro- pe.
 a a cso ki - ri - eso me - fi làn -thro- pe.

ΑΙΝΕΙΤΕ ...

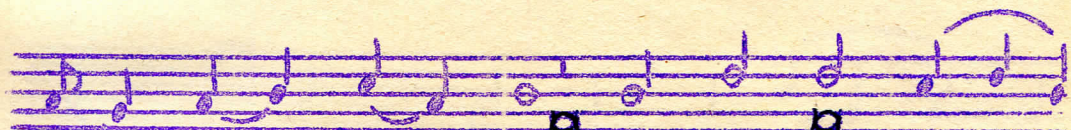
ἦχ. γ' 12



ΑΙΝΕΙΤΕ - - - ΕΙ - - - ΕΙ



ΕΙ - - - ΣΕ ΤΟ-ΟΥ ΚΥ U U U U U



U U U ΠΙ ΟΥ ΤΩΝ ΚΥ ΠΙ Ε



ΟΥ ΕΚ ΤΩ ΩΝ ΟΥ - ΟΙ ΑΜΑ - -



ΩΩ Ω ΩΩ ΟΙ ΑΙΝΕΙΤΕ ΟΥ -



ΤΟ Ο Ο ΟΥ ΕΥ ΤΟΙΣ U -

υ υ φι στοις Αλ

- λη λου ε α α α

α α α α α Αλ λη λου ε

α Αλ λη λου - - - ου ε

α α α α ε



Vin e Dhynamis...

Fix. m. a' *ni* i i in e dhy na mi *ff*

i i i i i i is

ton u ra - nò o o - -

o - o on si- in i- mi i

i i in a - - - o rà - tos

la tre - - - - vu - - sin

A musical staff in G major (one sharp) and 4/4 time. It begins with a treble clef and a key signature of one sharp (F#). The melody consists of quarter and eighth notes, with a long note on 'dhù'.

i - dhù - - ga - - ar i -is

A musical staff with notes and rests. Dynamic markings 'p' and 'pp' are present. The melody continues with quarter and eighth notes.

po o o re é - -ve te o va si-

A musical staff with notes and rests. Dynamic marking 'p' is present. The melody continues with quarter and eighth notes.

lé - - - e - - - evs ti i i is

A musical staff with notes and rests. Dynamic marking 'p' is present. The melody continues with quarter and eighth notes.

dho- - csis i dhù thi i i i sl a -

A musical staff with notes and rests. Dynamic marking 'p' is present. The melody continues with quarter and eighth notes.

a a mi- sti ki te - te - - li o

A musical staff with notes and rests. Dynamic marking 'p' is present. The melody continues with quarter and eighth notes.

o me- - ni dho ri - - fo- - ri i

A musical staff with notes and rests. Dynamic marking 'p' is present. The melody continues with quarter and eighth notes.

i i i i i i te pi sti- - che po- - o

tho - - pro - se - - - ltho o o o

men **rit.** i na me to hi zo - is e o ni

i i i i - u **rit.**

eje - - - - no me e e

e e e - e tha Al li i -



i - lu u - i i a a -



a - li - - - - lu i -



a al li - i lu i i i a



a a a a.

5 Qershor 1954

Viti i Sh' Mrisë.

Anno

1954



Mariano

1954

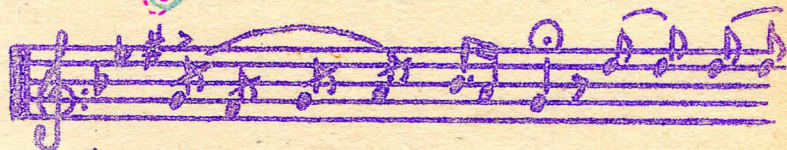
Aron, Aron...

18



mi pi i sanda.

Arhondes Evreon...

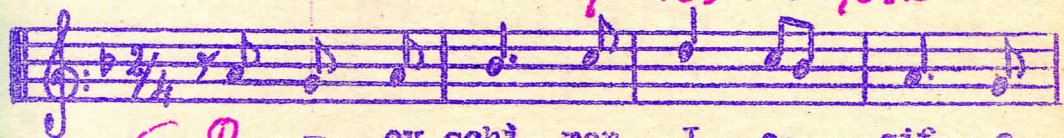


- 1) Arhondes E vré- on fari sé i
- 2) Va ra vèn i tisa to i fo niston
- 3) Co lînse e pòti sen e la òs e
- 4) Osthè òs ic ti-rmon kefilànthro



- 1) pa rà no- mi ca ta tu sotl- ros poni ra e vu lévsante.
- 2) o mò fro-na ton de e verjé- tinstavroti to ecrèvgason.
- 3) pa rà no- mos ton avtisto mà-na en e ri mo omvrísanta.
- 4) posky ri- e sò sont usea pl-sti a nimmàn tastapèthisu.

Ⓢ evschimon Josif - Tes miroforis.



Ⓢ
T

- ev schi mon I o- sif a
Tes my ro fò ris gji ne- esi pa



po tu esi lu ka- the- - lon to a hran
ra to mni ma e- pi - - stàs o àngje



ton su- so - ma sin dho ni ca- the- - ra
los e - vò - a ta mi ra tis-thni- - tis



i lì sas chié a- rò ma si en mni ma
y pà - rchi ar - mò dhi a Hris tòs dhe



ti - chié - - nò ki dhé - vsas a pé - the -
dià- ftho- - ras e dhi -cthi a lò - tri -



to o - - o .- Dhòesa chié nyn...
o o - - os.-

~
E
ghenee pase
~
20



E ghe - - - ne - e - pa
 Zo o - - - do - ta - so
 Thri non - - - si - ne - ki
 O fos - - - ton - o - ftha



a - - - a - se y - non - - - ti
 o - - - o - ter dho - csa - - - su
 i - - - i - ni i - pa - - - na
 a - al mon - - - mu glià ki ta - ton



ta fi - su pros - fe ru - si - Cri - ste e mu.
 te ora ti su ton a din - ce - the - le ondi.
 gnosmi i tir su - lo gje - ne - ero - the en dos.
 mu te ec non pos - ta fo - nin - ca - li i pti.



I Zoi en tafa...



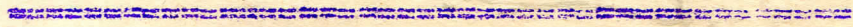
I zo i enta - fo o ca te te -
 I zo i ^{thni-}pos - pos chié ta -
 X Ne ga ly nomen - se e I i su -
 O o re osca - li i pa ra pan -



this Cri ste e ke An jé lonstrati- e e csepli - nton
 fo i chi is tu thanà tu to va - si li on li- - is
 Va si le ev che ti mò mentin ta- fin ke ta pa- - thi
 tas vro tu us os a nì de os ne-cros ka ta fe -- ne



to sin- ca tà va sin dho csa zu se tin- sin.
 de ke - tu à du tus ne crùs ec ~~tis fthe- ras.~~
 su di - on é so sas i màs ec ~~sa ni - stas.~~ tis ftho- ras.
 te o - tinfi sin o ra i sas tu pan - dos.



Theotoche Parthene..



A na ne a nes The o tò - chie Parthe



e ne Chie re cli - - - - - macc e pu



rà ni - - e - di is ca - tévi o Theos



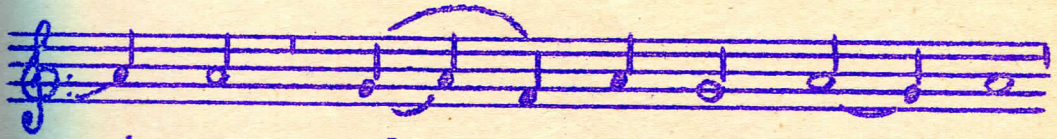
chiére gjé fi - - - ra - - me tà - - gu sa



tus ec gjis pros u - - - ra - - -



nò - - - on Chié re Al - li - - lu



i a al - - li lu - i a



Al li - lu - - i a.

