

Η
ΘΕΙΑ ΛΕΙΤΟΥΡΓΙΑ

~ Η ΘΕΙΑ ΛΕΙΤΟΥΡΓΙΑ ~

Ω - μνή.

Κυ ρι ε δε η σου.

Ταις πρεσβει αις της θε ο . το . κου Σω τερ - σω .

4^a Volta
σου η . μας Δοξα... κνών... Ταις πρεσβει αις της θε ο

p p
το . κου - Σω τερ σω . σου η . μα - - - ας.

Κυ ρι ε ε δε η σου.

Πρεσβειαι των Αγιων σου σωσον η μας Κυρι

ε ----

Σωσον η μας Χι ε θεου ο α

να στας εκ νε κρων ψαλλοντας σοι Αη. Αη. δου. ι. α.

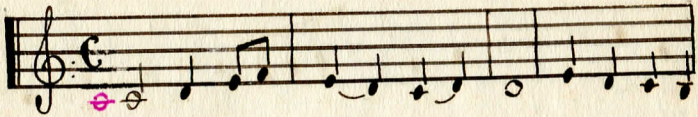
Αγιος
ο θεός...

Αγιος ο θεος, Αγιος ισχυ

ρος, Αγιος Αθα - να - τος ε - λε η - σον - η - μας.

Οὐ τὰ Χερουβὶμ...

Ηχ. πλ. δ.



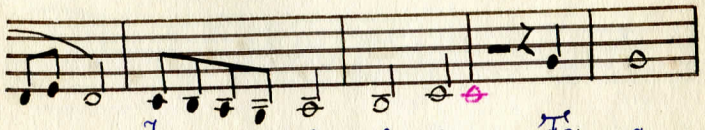
Οὐ τὰ χε - ρου - βιμ οὐ τὰ χε ρου



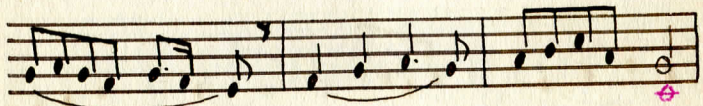
βιμ μὴ στί - κω - ως εἰ κο νί - ι -



Ἰο - οὐ τες καὶ - - - τῆ



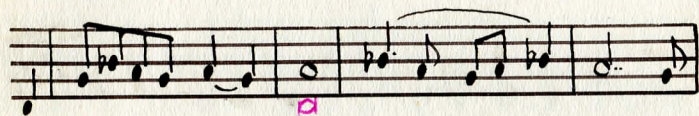
- ἡ Ἰω - ο ποι ω Ἰρι α



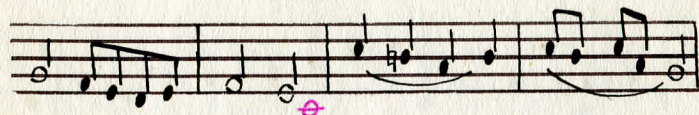
α - α α - α δι



Χρὶ α . α . . . δι ι τὸν



τρι σα . . γι . ον υ . . υ μνον προ



σα δο . ον τε ες πα . . α . . σαν



την βι ω τι κην α πο θω . . ω . ω



με . θα με ρι μνα . α . α

α ως τον Βασι λε . ε . α .

των ο - των υ πο δε ξο . . ο

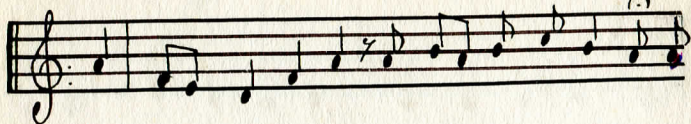
με . . ε τα | ταις αγγε λι καις α - ο .

ρά - τως δο - ρυ φο - ρου με - νου τα - ξε σι - ν

τα - ξε - σιν Αδελφ η σου - ου . ι . . α .

Πατέρα Υιόν.....

ἤχη γ'

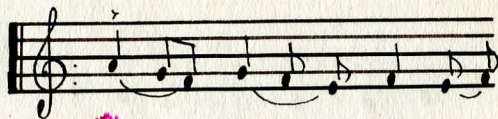


Πα-τε-ρα Υι-ον και α-γι-ον πνευμα ἕρι.

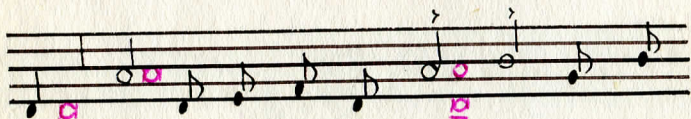


α-δα ο-μο-ου-σι-ον και α-χω-ρι-στον.

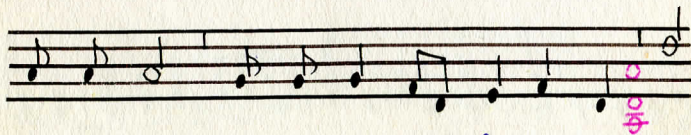
Ἅγιος... Ἅγιος
Ἅγιος... ἤχη γ'



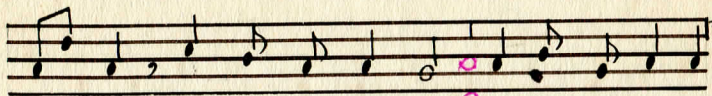
Ἄ-γι-ος Ἄ-γι-ος Ἄ-γι-



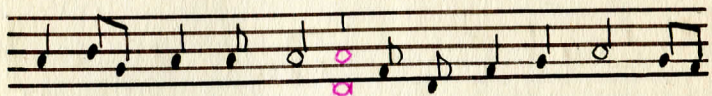
ος Κυ-ρι-ος σα-βω-θ πλη-ρης ο



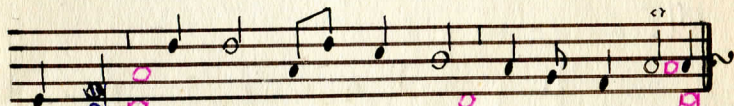
ου-ρα-νος και η-γη της-δο-ξης σου ω.



σαν. να εν τοις υ ψι στοις ευ λο γη με νος



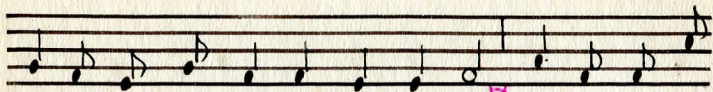
ο . ερ χο . με . νος εν ο νο . μα τι Κυ .



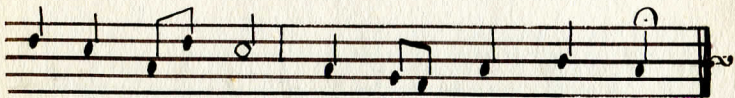
ρι . ου ω . σαν . να α εν τοις υ . ψι στοις .



Σ ε υ . μ νου . μεν σε ευ . λο . γου . μεν



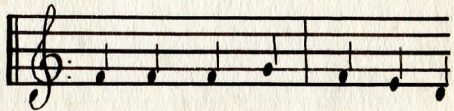
σοι ευχαριστούμεν Κυριε και δεομε



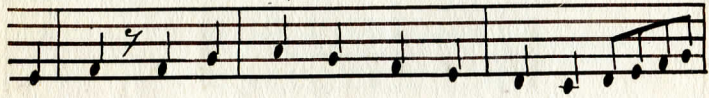
θα σου ο θεος ημων.

Ἁγιόν ἔστιν...

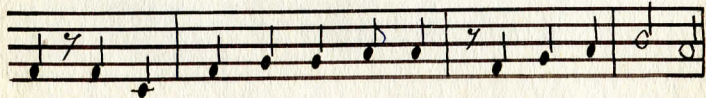
Ἥχ. γ'



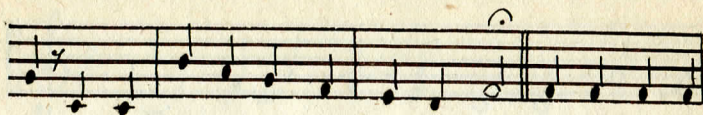
Ἁγιόν ἐστὶν ὡς α



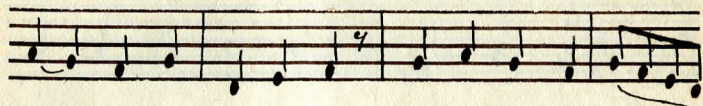
ληθως μακαριζει σε την θεοτο



κον την αειμακαριστον και παναμωμη



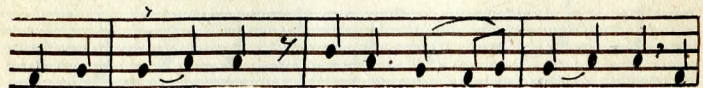
τον και μη. τε. ρα του θε. ου η. μων **την** τι. μι. ω



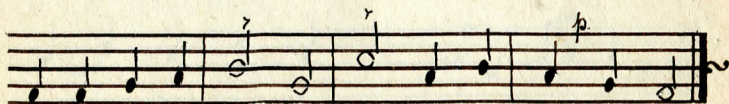
τε. ραν των Χε. ρου. βιμ και εν δο. ξο. τε.



ραν α. συ. κρι. τως των Σε. ρα. φιμ την α



δι. α. φθο. ρως θε. ου λο. γον. τε. κου. σαν την

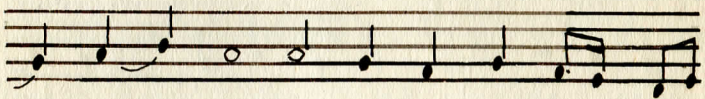


ον. τως θε. ο. το. κον Σε. με. γα. λο. νο. μεν.

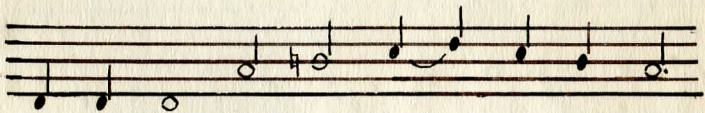
ΔΙΝΕΙΤΕ ΤΟΝ Κ.



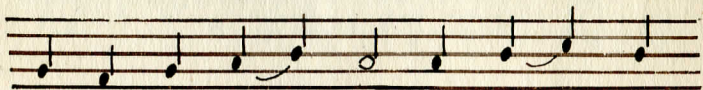
ΔΙ - ΝΕΙ - - - - - ΤΕ ΤΟΝ ΚΥ -



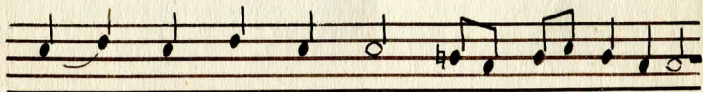
ΡΙ - - - ΟΥ ΕΚ - ΤΩΝ ΟΥ - ΡΑ -



- - - ΝΩΝ ΑΙ - ΝΕΙ - - - - - ΤΕ



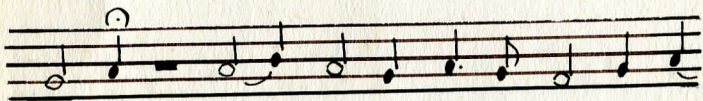
ΑΥ - - - - - ΤΩΝ ΕΝ ΤΟΙΣ



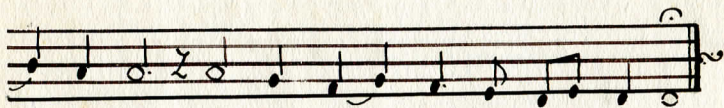
Ο - - - - - ΨΥ - - - - - ΟΤΟΙΣ



Ал - лн - лон - и - а -



а Ал - лн - лон -

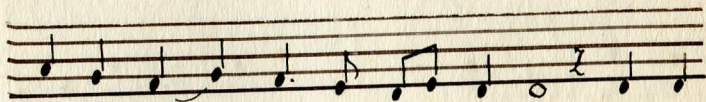


и а Ал - лн - лон - и а.

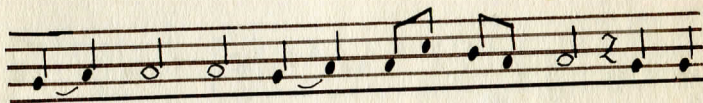
Ποτήριον.



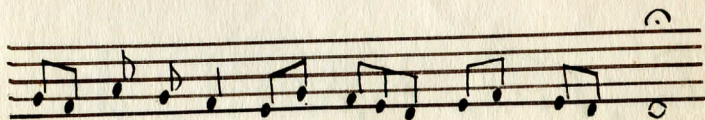
Πο - τή - ρι - ον σω - τή -



ρι - ου Αν - θρω - πων και το



ο - νομα Κυ - ρι - ου ε πι



κα - θε - σο - ραι

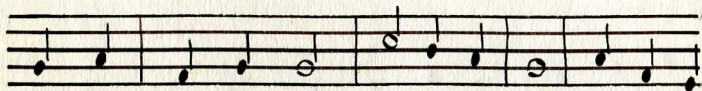


Αν - θρω - πων ι - α - α.

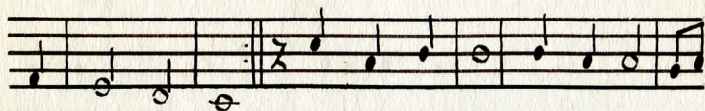
Εἰς Μνημόσυνον.



Εἰς μνη - μο - συ - νον αἰ



ω - νι - ον ε - σται ε - σται



δα και ος ε - σται ε - σται ε -

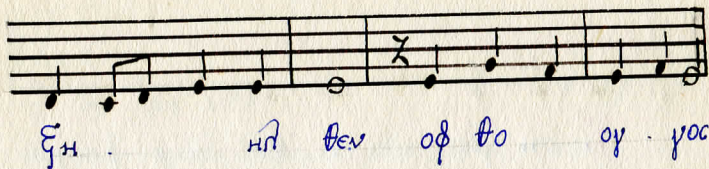


σται δι - και ος

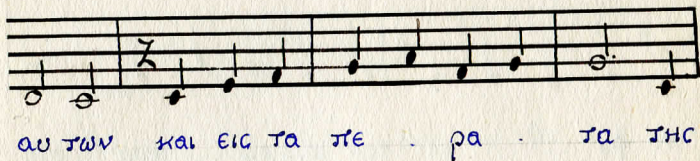
Εἰς Πᾶσαν τὴν γῆν.



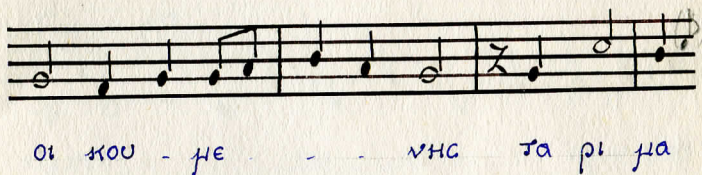
Εἰς πα - σαν τὴν γῆν ε



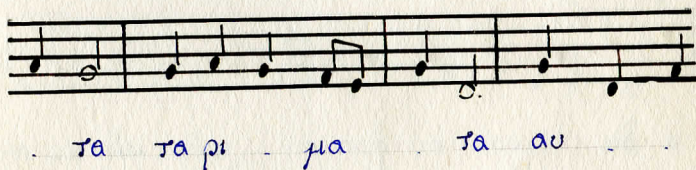
ΞΗ . . . ΗΠ ΘΕΩ ΟΦ ΘΟ ΟΥ . ΓΟΣ



ΑΥ ΤΩΝ ΚΑΙ ΕΙΣ ΤΑ ΠΕ . ΡΑ . ΤΑ ΤΗΣ



ΟΙ ΚΟΥ - ΜΕ . . . ΝΗΣ ΤΑ ΡΙ ΜΑ



. ΤΑ ΤΑ ΡΙ - ΜΑ ΤΑ ΑΥ . .

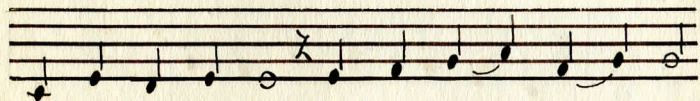


. . . ΤΩΝ .

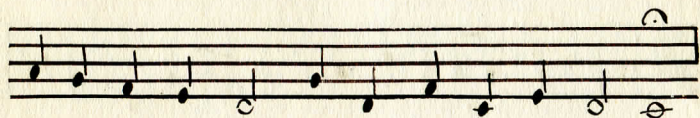
Ἰσημεῖωθι...



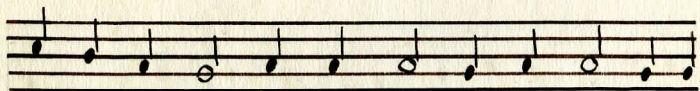
Ἰσημεῖω - θι - εἶπεν ἡμᾶς



το φῶς - τῶν προση - λυμένων σου



Κυ - ρι - ε

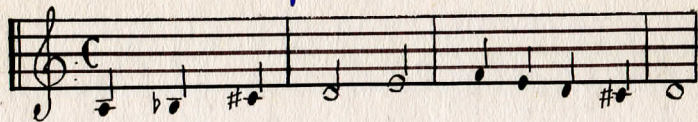


εἰδὼς - τὴν εὐφρο - σι - νίαν εἰς τὰς

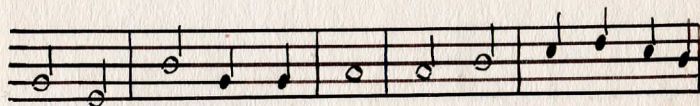


καρ - δια - σπληνῶν.

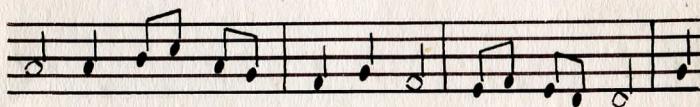
Θ. γαρ θιάσθε...



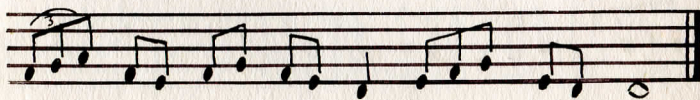
Θ γαρ θιάσθε δι - και - οι



εν κυ ρι - - ω τοις ευ θε - -

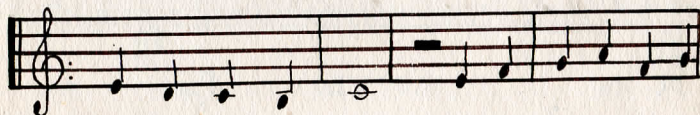


σι τρε - - πει - αι νε - σις Αδ

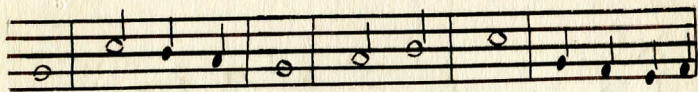


- Αη - σου - ι - - α.

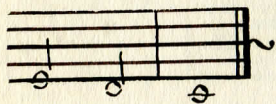
Αύτρωσι...



Αυ - τρω - σιν α - πτε - σται -



Κε - ν - Κυ - ρι - ος - τω - Πα - ω - τω - Πα -

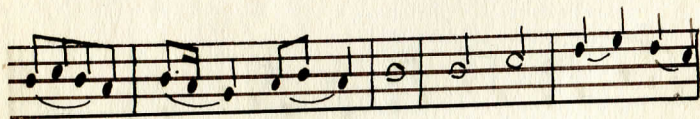


ω - αυ - του.

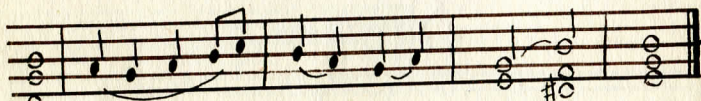
Ε - πε - φάνη...



Ε - πε - φα - νη - η - γα -



ρι - σου - του - Θε - ου - η - σω - τη - ρι -

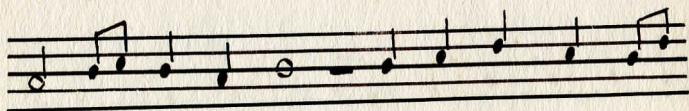


ος - Πα - σιν - αν - θρω - ποις

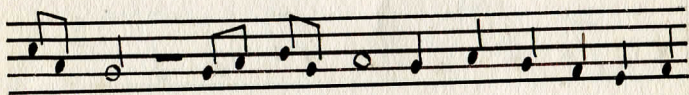
Τὸ Πνεῦμα σου...



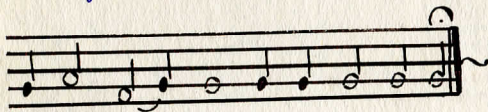
Τὸ Πνεῦμα σου το



α γα τον ο δη γη σει

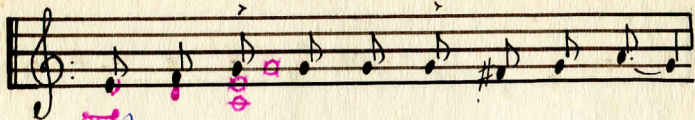


με εν γη εν γη ε ευθει

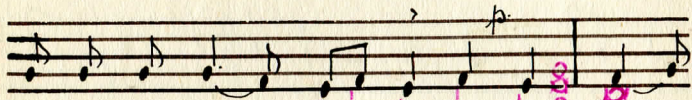


α Ωρην σου α.

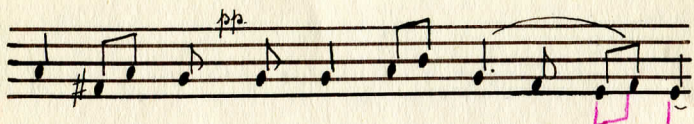
Τὴν ῥωθὴν τῶ...



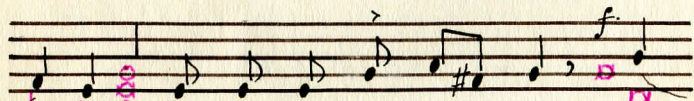
Τὴν ῥωθὴν τῶ το στο μα η μωων



αι νε σε ως σου Κυ ρι ε ο τως



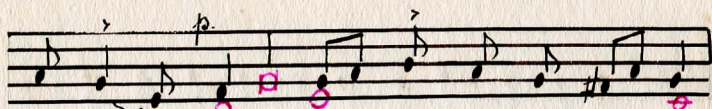
α νο μη σω μεν την δο ξαν σου



ου ο τι η ξι ω σας η



μα ασ των α γι ων σου με τα σχειν μη



στη . ρι . ων συν . τη . ρη . σου η . μας



εν τω σω . α . γι . ασ . μω .

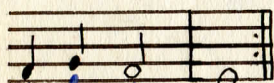
Εἶπ' τὸ ὄνομα...



Ἐἶπ' ἡ τὸ ο - νο - μα Κυ - ρι - ου εὐ - λο - γῆ



με - νον - α - πο - του νυν και ε - ως του αι - ω -



νο - ος



τὸ ο - νο - μα Κυ - ρι -

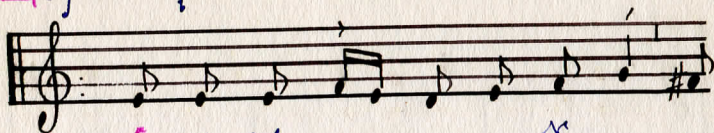


ου εἶπ' ἡ εὐ - λο - γῆ - με - νον α - πο - του

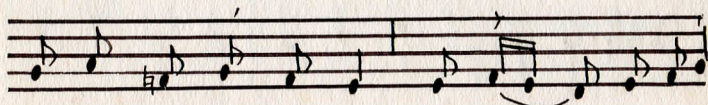


νυν και ε - ως του αι - ω - νο - ος.

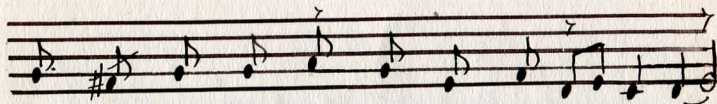
Δόξα Πατρί...



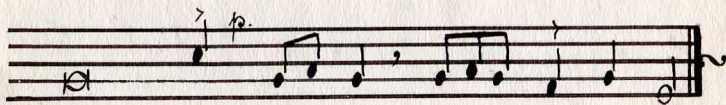
Δο. ξα Πα. τρι . . . και Χι. ω και



α. γι. ω Πνευ μα. τι και νυν . . . και α. ει



και εις τους αι. ω. νας των αι. ω. νων α. μνη



Κυριε ελεησον δε. στο. τα ευ. λο. γη. σου.

μνη

Ποδύχρονιον

Handwritten musical score for the first system of 'Ποδύχρονιον'. It features a treble and bass staff in G major (two sharps) and common time (C). The melody is written in the treble staff, and the bass line is in the bass staff. The lyrics are written below the treble staff.

Πο. δυ. χρο. νι. ον ποι. Η. σαι Κυ.

Handwritten musical score for the second system of 'Ποδύχρονιον'. It continues the melody and bass line from the first system. The lyrics are written below the treble staff.

ρι. ος ο Θε. ος τον Πα. να. υη. ο. τα.

Handwritten musical score for the third system of 'Ποδύχρονιον'. It continues the melody and bass line. The lyrics are written below the treble staff.

τον. Πα. τε. ρα η. μων Πα.

παν Πι ον σου τω πα νο

σι ο τα τω Αρχι.μαν.δρι τη ημων

σι δο ρω Κυ.ρι.ε φυ.λατ.τε αυ

τοῦς εἰς πῶλ λα ε - τη εἰς πῶλ λα

ε - τη, εἰς πῶλ λα - ε - τη.

Α. Σαρουνῆ Κουτσίττα

Ἐν Ρώμῃ 1-11-1954

ⲙ. Ε.

